



# WAGNER INSTRUMENTS

POST OFFICE BOX 1217  
GREENWICH, CT 06836 - 1217 U.S.A ☎(203) 698-9681

## INSTRUCTIONS / FDIX -- FIRMWARE LOADER

3/05/18

### I. GENERAL

The Wagner Instruments “FDIX Firmware Loader” application can be used to update gage firmware on site, eliminating the necessity of returning the gage to Wagner Instruments.

FDIX firmware must be at V3 3 3 or greater to support this feature.

### II. INSTALLATION – LOADER APPLICATION

- > Download “FDIX Firmware Loader” (FDIX Firmware Loader.zip) from the “Downloads” area of the Wagner Instruments website: [www.wagnerinstruments.com](http://www.wagnerinstruments.com). Save the file.
- > Unzip “FDIX Firmware Loader” folder.
- > Click on “setup.exe” and follow the installation instructions. In general, the proposed defaults are suitable.

### III. DOWNLOAD NEW FDIX FIRMWARE

- > Download the desired version of FDIX firmware from the Wagner Instruments website.

### IV. PROGRAMMING A GAGE

- > Launch the flash loader program. The following form will appear:

Wagner Instruments FDIX firmware loader (02/27/2018) - V 2.1

File Info

Connection

Com Port Selection: Com 3

Baud Rate Selection: 19200

Application Code ☒  Browse

EEPROM Code ☐  Browse

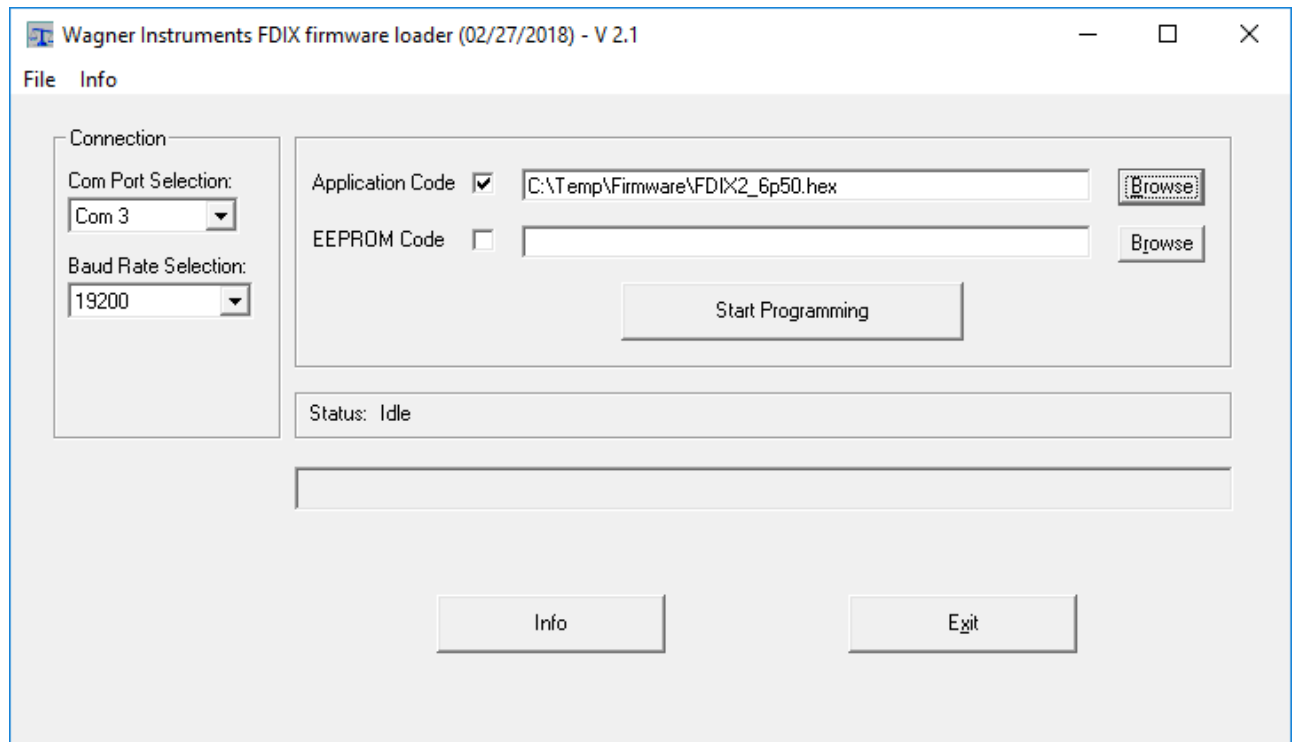
Start Programming

Status: Idle

Info Exit

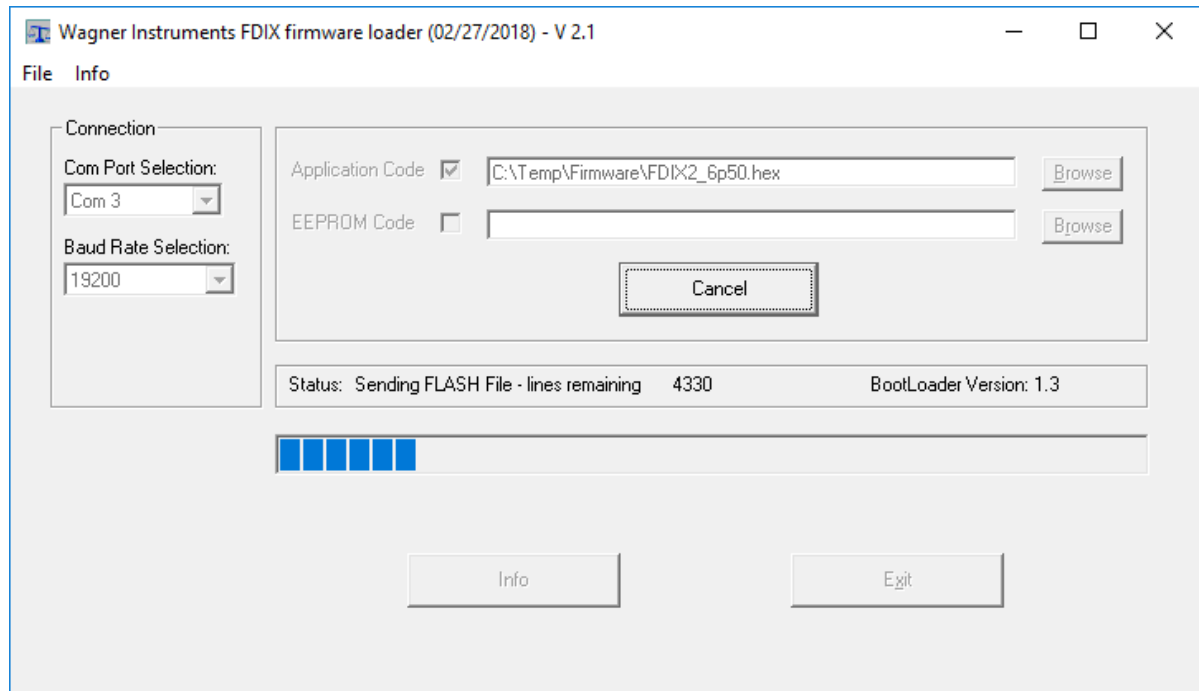
## **INSTRUCTIONS / FDIx -- FIRMWARE LOADER (continued)**

- > Select the appropriate USB / RS232 communications port (Example: COM 1).  
This is the same COM Port used by the USB Cable. Check Windows "Device Manager" to confirm which COM Port is used by the USB Cable (To find COM Port setting, see also "FDIX\_Instructions\_USB Cable Driver").
- > Select Baud Rate = 19200
- > Check the Application Code checkbox. Note that, in general, the gage firmware will be updated leaving previous gage settings as is (EEPROM code).
- > Using the Browse button on the Application Code line, browse to the gage firmware file downloaded in Step III (Example: FDIx650.hex)

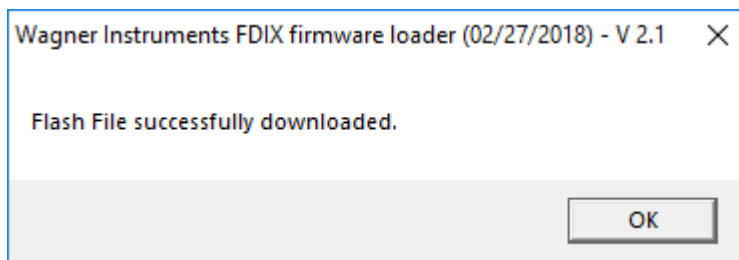


- > Connect USB port from PC to gage.
- > Power up the gage while holding down the far right down arrow button.  
The gage will display "IDLE".
- > Press the "Start Programming" button on the loader application.

## **INSTRUCTIONS / FDIX -- FIRMWARE LOADER (continued)**



- > During the programming operation, the application will display the number of lines remaining to be programmed, as well as a progress bar. The gage display will show "Prog" with an alternating check mark during the programming process. When programming is complete, the application will show a dialog box saying "Flash File successfully downloaded". The gage display will return to "IDLE".



- > Press OK (Flash file successfully downloaded), then Exit the flash loader application.
- > Power the gage off and on. The new version of gage firmware will be operational.

File name: FDIX\_Instructions\_Firmware Loader\_V2p10\_180305