



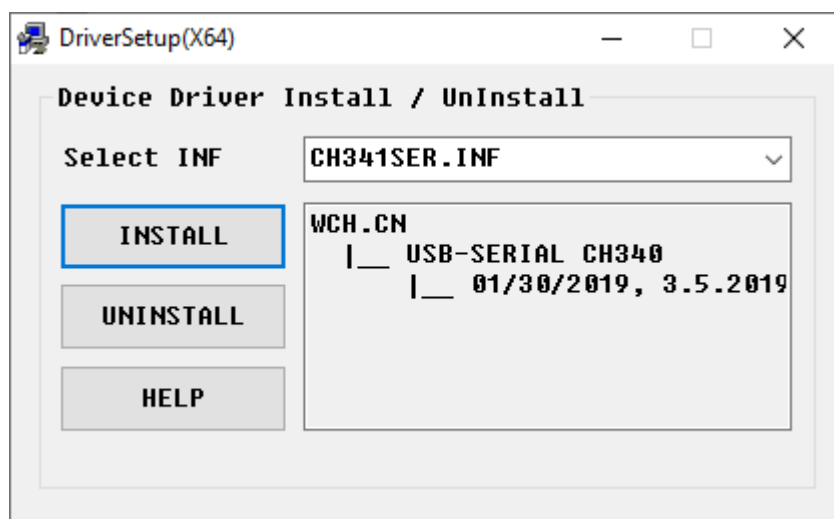
INSTRUCTIONS / FDX - USB CABLE DRIVER INSTALLATION

2019

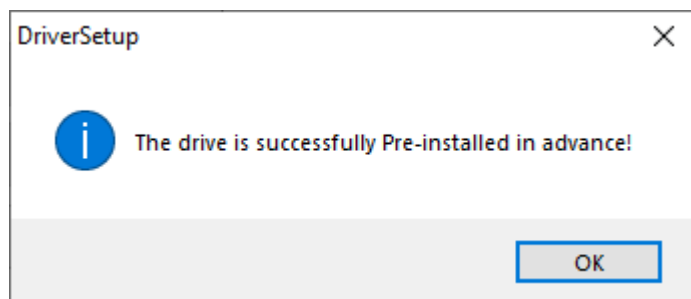
- > The Wagner **FDX Resource Disc** includes the USB cable driver in a folder named "FDX_USB Cable Driver_2019". Click on this folder to locate the cable driver file **CHASER_WIN.ZIP**. Right click and select "Extract All..."

Note: Cable driver must be installed **BEFORE** the gage and USB cable are attached to PC or laptop. Do not connect gage to the PC at this time.

- > In the unzipped subdirectory, open the folder **CH341SER_WIN** and execute the file **SETUP.EXE**. The setup function will automatically check for and install the appropriate driver for the operating system and buss size (32 or 64 bit) in use.
- > The following dialog box will appear (in this example the OS is 64 bits):



- > Click **INSTALL**.
- > A number of install screens will be rapidly displayed. After installation the following dialog box is displayed.



- > Click **OK**.



WAGNER INSTRUMENTS

POST OFFICE BOX 1217
GREENWICH, CT 06836 - 1217 U.S.A ☎(203) 698-9681

> After installing cable driver, plug cable into gage and computer USB port.
Power up the gage.

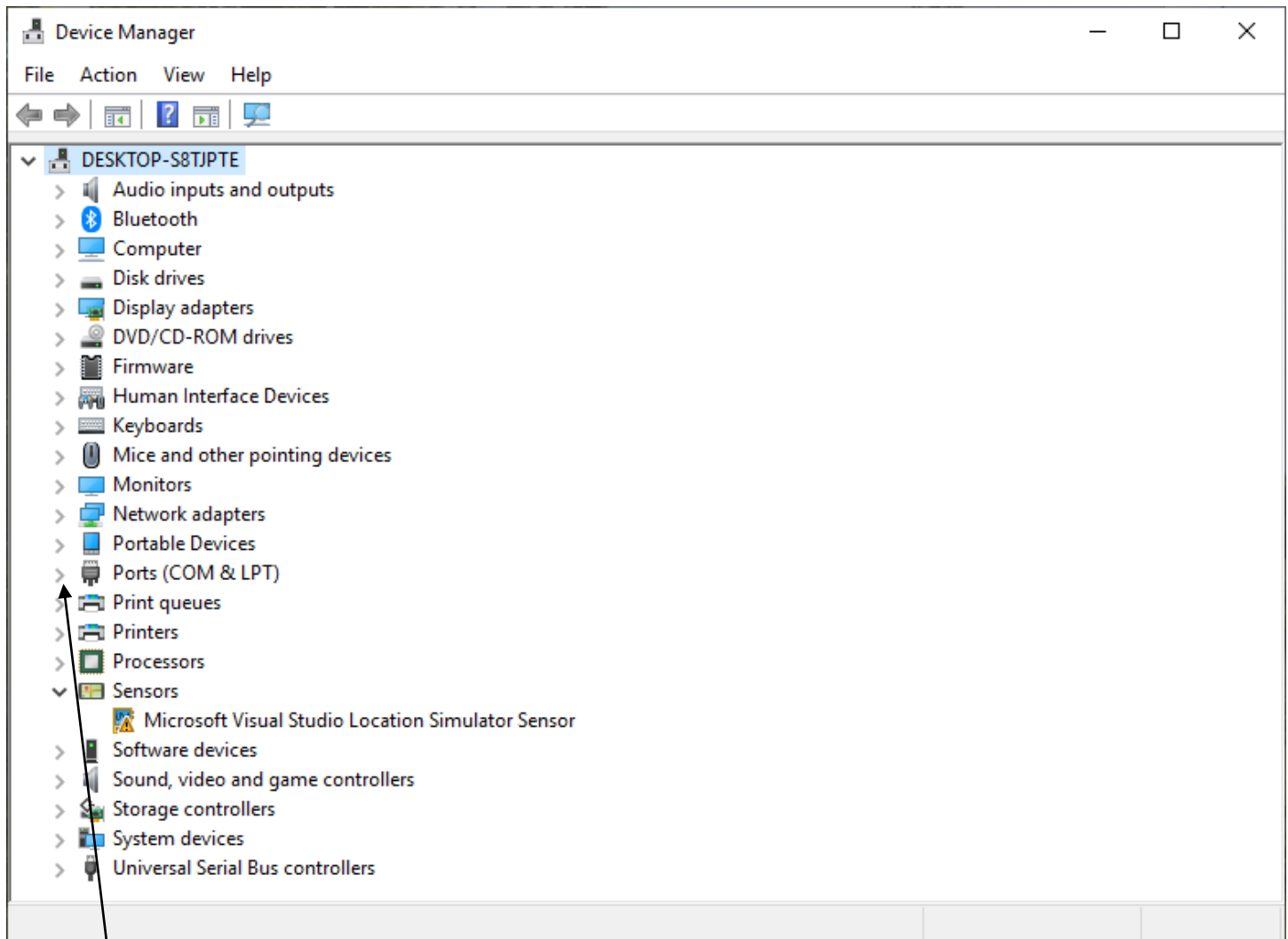
> To verify installation and gage Port Number:

- Go to Start-> Control Panel->System->Hardware Tab->Device Manager

OR,

For Win 10, type “Device Manager” in Win 10 search box and select “Device Manager”.

- The following is displayed:



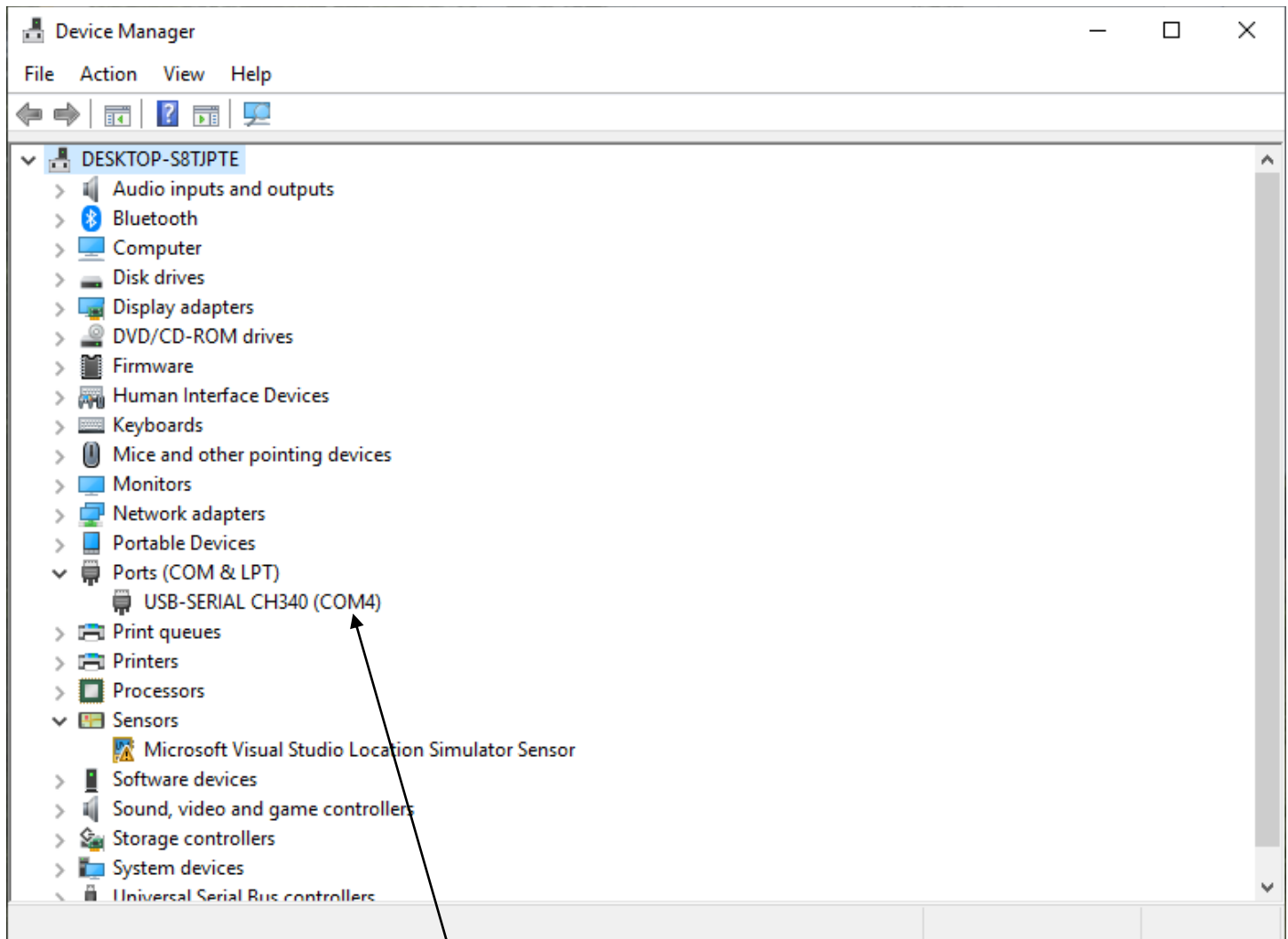
- Select Ports (COM & LPT).



WAGNER INSTRUMENTS

POST OFFICE BOX 1217
GREENWICH, CT 06836 - 1217 U.S.A ☎(203) 698-9681

- The following is displayed:



- In this case, the gage COM Port is COM4.